

CS-14-183

CHANGE ORDER APPROVAL FORM

PROJECT: Bonnieview Road Cross Drain Repair

CHANGE ORDER NUMBER: 1

DATE: 6-2-15

CONTRACT NUMBER: CM2210

TO CONTRACTOR: Kirby Development Inc.

Reason for Change Order: After the Contractor desilted the pipes, as called out in the plans, it was discovered that the pipe joints were leaking water at the bottom therefore the Contractor resilted pipe runs No. 2 and 3. Amend contract by compensating the Contractor \$1,804.96 for all cost associated with resiltting two 40' lines of 48"x76" elliptical pipe (No. 2 and 3) and cap off ends.

Original Contract Sum.....	\$	<u>134,892.45</u>
Net Change by Previous Change Order/Supplemental Agreement.	\$	<u>.00</u>
Contract Sum Prior to This Change Order.....	\$	<u>134,892.45</u>
Amount of This Change Order (Add/Deduct).....	\$	<u>1,804.96</u>
New Contract Sum Including this Change Order.....	\$	<u>136,697.41</u>

15 JUN 10 AM 11:15
CONFIDENTIAL

The contract for substantial completion will be (increased) (decreased) (~~unchanged~~) by 14 days;
Substantial Completion: 05/27/15 ; Final Completion: 07/11/15

APPROVED BY: [Signature]
Project Manager (Department Head)

DATE: 6/2/15

APPROVED BY: [Signature]
Contract Manager

DATE: 6/10/15

APPROVED BY: [Signature]
Director of Office of Management & Budget

DATE: 6-19-15

APPROVED BY: [Signature]
County Manager

DATE: 6/22/15

ACCOUNT NO.: 63402541-563300 BJCD

15 JUN 23 PM 4:19
OFFICE OF COUNTY CLERK
MISSOURI COUNTY, MISSOURI

**SECTION 00 63 63
CHANGE ORDER REQUEST FORM**

Bonnieview Road Cross Drain Repairs

No. CM2210

15 JUN -5 PM 3:08

RECEIVED
COUNTY ENGINEERS
OFFICE

PROJECT

DATE OF ISSUANCE June 2, 2015

EFFECTIVE DATE June 2, 2015

NASSAU COUNTY BOARD OF COUNTY COMMISSIONERS

COUNTY Contract / Purchase Order No.: NC14-023

CONTRACTOR Kirby Development, Inc.

ENGINEER / ARCHITECT Connelly & Wicker, Inc.

You are directed to make the following changes in the Contract Documents.

Description: The undersigned parties agree to amend this contract by compensating the contractor \$1,804.96, for all costs associated with resilting two 40' lines of 48" by 76" elliptical pipe (Nos. 2 and 3) and cap off ends 1. Overrun existing Pay Item No. 0430-94-4; Pipe Desilting and 2. Compensating the contractor 1 lump sum at \$1,804.96 for plugging both 40' lines of 48" x 76" elliptical pipe.
Reason for Change Order: After the Contractor desilted the pipes, as called out in the plans, it was discovered that the pipe joints were leaking water at the bottom therefore the Contractor resilted pipe runs No. 2 and 3

Attachments: DWRs, Price Proposals Submitted and Pictures

<p>CHANGE IN CONTRACT PRICE:</p> <p>Original Contract Price</p> <p>\$ <u>134,892.45</u></p>	<p>CHANGE IN CONTRACT TIMES:</p> <p>Original Contract Times</p> <p>Substantial Completion: <u>May 13, 2015 / 45 days</u></p> <p>Ready for Final Payment: <u>June 27, 2015 / 90 days</u> (days or dates)</p>
<p>Net change from previous Change Orders No. <u>0</u> to No. <u>1</u></p> <p>\$ <u>0.00</u></p>	<p>Net change from previous Change Orders No. <u>0</u> to No. <u>1</u></p> <p><u>0</u> (days)</p>
<p>Contract Price prior to this Change Order</p> <p>\$ <u>0.00</u></p>	<p>Contract Times Prior to this Change Order</p> <p>Substantial Completion: <u>May 13, 2015 / 45 days</u></p> <p>Ready for Final Payment: <u>June 27, 2015 / 90 days</u> (days or dates)</p>
<p>Net Increase (decrease) of this Change Order</p> <p>\$ <u>1,804.96</u></p>	<p>Net Increase (decrease) of this Change Order</p> <p><u>14</u> (days)</p>
<p>Contract Price with all approved Change Orders</p> <p>\$ <u>136,697.41</u></p>	<p>Contract Times with all approved Change Orders</p> <p>Substantial Completion: <u>May 27, 2015 / 59 days</u></p> <p>Ready for Final Payment: <u>July 11, 2015 / 104 days</u> (days or dates)</p>

RECOMMENDED:

By: [Signature] CDM Smith
Engineer/Architect (Authorized Signature)

Date: 6/2/2015

APPROVED:

By: [Signature]
COUNTY (Authorized Signature)

Date: 6/2/15

ACCEPTED:

By: [Signature] Peter B. Kirby
Contractor (Authorized Signature)

Date: 6-5-15

NOTE: YELLOW CELLS REQUIRE INPUT

**COST ESTIMATE FOR
INCREASE, DECREASE OR ALTERATION IN THE WORK (Spec. 4-3.2)**

FIN#: N/A Contract #: CM2210 Fed Proj. #: N/A
 Point of Contact (Name/Phone #): Mary Harmon / 904-781-8131
 Email Address: harmonm@cdmsmith.com
 Estimate Prepared By: Mary Harmon
 Company: CDM Smith, Inc.
 CONTRACT AMOUNT \$ 134,892.45
 CONTRACT TIME 45

Signature

Date

CONTRACTOR Kirby Development, Inc.

a) LABOR and BURDEN	\$ 1,944.00
b) MATERIALS AND SUPPLIES	\$ 771.28
c) EQUIPMENT	\$ 1,387.11
d) INDIRECT COST, EXPENSES, AND PROFIT	\$ 717.92
	<u>\$ 4,820.31</u>

SUB-CONTRACTOR 0

a) LABOR and BURDEN	\$ -
b) MATERIALS AND SUPPLIES	\$ -
c) EQUIPMENT	\$ -
d) INDIRECT COST, EXPENSES, AND PROFIT	\$ -
	<u>\$ -</u>

SUB-CONTRACTOR 0

a) LABOR and BURDEN	\$ -
b) MATERIALS AND SUPPLIES	\$ -
c) EQUIPMENT	\$ -
d) INDIRECT COST, EXPENSES, AND PROFIT	\$ -
	<u>\$ -</u>

SUB-CONTRACTOR 0

a) LABOR and BURDEN	\$ -
b) MATERIALS AND SUPPLIES	\$ -
c) EQUIPMENT	\$ -
d) INDIRECT COST, EXPENSES, AND PROFIT	\$ -
	<u>\$ -</u>

SUB-CONTRACTOR 0

a) LABOR and BURDEN	\$ -
b) MATERIALS AND SUPPLIES	\$ -
c) EQUIPMENT	\$ -
d) INDIRECT COST, EXPENSES, AND PROFIT	\$ -
	<u>\$ -</u>

CONTRACTOR 0

a) Cost Estimated by pay item comparison	\$ 1,344.16
--	-------------

CONTRACTOR 0

a) Cost Estimated by pay item comparison	\$ -
--	------

TOTAL COST OF INCREASE, DECREASE OR ALTERATION IN THE WORK	\$ 6,164.47
---	--------------------

**COST ESTIMATE FOR
INCREASE, DECREASE OR ALTERATION IN THE WORK (Spec. 4-3.2)**

FIN#: N/A Contract #: CM2210 Fed Proj. #: N/A
 Point of Contact (Name/Phone #): Mary Harmon / 904-781-8131
 Email Address: harmonm@cdmsmith.com
 Estimate Prepared By: Mary Harmon
 Company: CDM Smith, Inc.
CONTRACT AMOUNT \$ 134,892.45

CONTRACTOR: Kirby Development, Inc.

a) LABOR and BURDEN

LABOR	TIME	UNIT	RATE	BURDEN (%)	LABOR plus BURDEN SUB- TOTAL
Superintendent	36.00	HR	\$ 18.00		\$ 648.00
Skilled Laborer	36.00	HR	\$ 13.00		\$ 468.00
Skilled Laborer	36.00	HR	\$ 13.00		\$ 468.00
Common Laborer	36.00	HR	\$ 10.00		\$ 360.00
					\$ -
					\$ -
					\$ -
					\$ -
					\$ -

TOTAL LABOR and BURDEN \$ 1,944.00

b) MATERIALS AND SUPPLIES

MATERIAL	QTY.	UNIT	RATE	SUB-TOTAL
Brick - Clay	1244.00	EA	\$ 0.62	\$ 771.28
				\$ -
				\$ -
				\$ -
				\$ -
				\$ -
				\$ -
				\$ -

TOTAL MATERIALS AND SUPPLIES \$ 771.28

**COST ESTIMATE FOR
INCREASE, DECREASE OR ALTERATION IN THE WORK (Spec. 4-3.2)**

FIN#: N/A Contract #: CM2210 Fed Proj. #: N/A
 Point of Contact (Name/Phone #): Mary Harmon / 904-781-8131
 Email Address: harmonm@cdmsmith.com
 Estimate Prepared By: Mary Harmon
 Company: CDM Smith, Inc.
 CONTRACT AMOUNT \$ 134,892.45

c) EQUIPMENT (By Specification 4-3.2.1 Allowable Cost for Extra Work)

EQUIPMENT	Operating Cost		Standby Cost		SUB-TOTAL
	Allowable Hourly FHWA Rate w/ Adjustments	HRS	Allowable Monthly Rate with Adjustments	HRS	
Cat Excavator 308	\$ 49.32	20.50			\$ 1,011.06
Cat Loader 924	\$ 33.34	5.50			\$ 183.37
Gorilla Cart 600 LB	\$ 2.33	36.00			\$ 83.88
Pump	\$ 6.80	16.00			\$ 108.80
					\$ -
					\$ -
					\$ -
					\$ -
					\$ -
TOTAL EQUIPMENT					\$ 1,387.11

d) INDIRECT COST, EXPENSES, AND PROFIT (1) or (2), whichever is greater)

(1) 17.5% of the sum of a), b), & c) above: \$ 717.92
 (1)(i)

BOND: For any additional bond for the additional or unforeseen work, the Contractor shall provide clear and convincing proof that the bond has actually been provided and paid for a separate bond premium for such additional or unforeseen work.

(1)(ii) SUBCONTRACTOR MARKUP:
 Subcontractor Cost for Extra Work: \$ -
 First \$50,000 10% \$ -
 Over \$50,000 5% \$ -
\$ 717.92

(2) Average overhead per day:

A	Original Contract Amount	\$	134,892.45
B	Original Contract Time		<u>45</u>
C	8%		
D =	$\frac{A \times C}{B}$	\$	239.81
			0

Calendar days of entitlement that are in excess of the first 10 cumulative entitlement calendar days for the contract:

\$ -

TOTAL INDIRECT COST, EXPENSES, AND PROFIT \$ 717.92

ENGINEER'S COST ESTIMATE FOR EXTRA WORK

FIN#: _____ N/A _____ Contract #: CM2210 Fed Proj. #: N/A
 Point of Contact (Name/Phone #): Mary Harmon / 904-781-8131
 Email Address: harmonm@cdmsmith.com
 Estimate Prepared By: Mary Harmon
 Company: CDM Smith, Inc.

Prime or SUB-CONTRACTOR:

a) Estimate based on Statewide Average

Pay Item	Description	UNIT	Weighted Average Cost	Quantity	Estimated Cost
0120-6	Embankment	CY	\$21.68	62.00	\$ 1,344.16
					\$ -
					\$ -
					\$ -
					\$ -
					\$ -
					\$ -
					\$ -

TOTAL SUBCONTRACTOR COST: \$ 1,344.16

Comments:



www.equipmentwatch.com

Rental Rate Blue Book®

May 11, 2015

Caterpillar 308D CR Crawler Mounted Hydraulic Excavators



Size Class:
Operating Weight 6.1 - 8.0 MTons
Weight:
17,306 lbs.

Configuration for 308D CR

Power Mode	Diesel	Bucket Capacity - Heaped	.4 cy
Operating Weight	7.9 t	Net Horsepower	55.6 hp

Equipment Notes: General Purpose bucket included in rate, unless otherwise noted.

Blue Book Rates

** FHWA Rate is equal to the monthly ownership cost divided by 176 plus the hourly estimated operating cost.

	Ownership Costs				Estimated Operating Costs Hourly	FHWA Rate** Hourly
	Monthly	Weekly	Daily	Hourly		
Published Rates	\$4,850.00	\$1,360.00	\$340.00	\$51.00	\$22.70	\$50.26
Adjustments						
Region (Florida: 96.6%)	(\$164.90)	(\$46.24)	(\$11.56)	(\$1.73)		
Model Year (100%)	-	-	-	-		
Ownership (100%)	-	-	-	-		
Operating (100%)					-	
Total:	\$4,685.10	\$1,313.76	\$328.44	\$49.27	\$22.70	\$49.32

Rate Element Allocation

Element	Percentage	Value
Depreciation (ownership)	38%	\$1,843.00 / mo
Overhaul (ownership)	48%	\$2,328.00 / mo
CFC (ownership)	6%	\$291.00 / mo
Indirect (ownership)	8%	\$388.00 / mo
Fuel (operating) @ \$3.98	35%	\$7.97 / hr

Revised Date: 2nd Half 2014

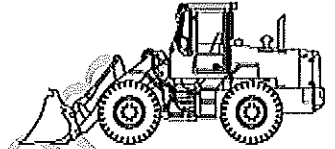
Rental Rate Blue Book®

June 2, 2015

Caterpillar 906H (disc. 2012)

4-Wd Articulated Wheel Loaders

Size Class:
 Net Hp 70 - 79 HP
 Weight:
 12,412 lbs.



Configuration for 906H

Power Mode Diesel Bucket Capacity - Heaped .9 cy
 Net Horsepower 70.0 hp Operator Protection EROPS

Equipment Notes: Includes General Purpose bucket and ROPS, unless otherwise noted.

Blue Book Rates

** FHWA Rate is equal to the monthly ownership cost divided by 176 plus the hourly estimated operating cost.

	Ownership Costs				Estimated Operating Costs	FHWA Rate**
	Monthly	Weekly	Daily	Hourly		
Published Rates	\$2,515.00	\$705.00	\$175.00	\$26.00	\$19.75	\$34.04
Adjustments						
Region (Florida: 95.1%)	(\$123.24)	(\$34.55)	(\$8.58)	(\$1.27)		
Model Year (100%)	-	-	-	-		
Ownership (100%)	-	-	-	-		
Operating (100%)					-	
Total:	\$2,391.76	\$670.45	\$166.42	\$24.73	\$19.75	\$33.34

Rate Element Allocation

Element	Percentage	Value
Depreciation (ownership)	43%	\$1,081.45 / mo
Overhaul (ownership)	38%	\$955.70 / mo
CFC (ownership)	7%	\$176.05 / mo
Indirect (ownership)	12%	\$301.80 / mo
Fuel (operating) @ \$3.98	53%	\$10.45 / hr

Revised Date: 2nd Half 2014



www.equipmentwatch.com

Rental Rate Blue Book®

May 11, 2015

Lightweight Centrifugal Pumps

Miscellaneous Models

Size Class:
CPB Rating To 2"

Configuration for Lightweight Centrifugal Pumps

Power Mode	Gasoline	CPB Rating	6M
Size	1.5 in	Pump Capacity	6,500 gph
Horsepower	4.0		

Equipment Notes: Portable and self-priming. Hoses and auxiliary equipment are not included. Based on Contractor's Pump Bureau ratings system.

Blue Book Rates

** FHWA Rate is equal to the monthly ownership cost divided by 176 plus the hourly estimated operating cost.

	Ownership Costs				Estimated Operating Costs	FHWA Rate**
	Monthly	Weekly	Daily	Hourly	Hourly	Hourly
Published Rates	\$505.00	\$140.00	\$35.00	\$5.00	\$4.15	\$7.02
Adjustments						
Region (Florida: 92.5%)	(\$37.87)	(\$10.50)	(\$2.62)	(\$0.37)		
Model Year (100%)	-	-	-	-		
Ownership (100%)	-	-	-	-		
Operating (100%)						
Total:	\$467.13	\$129.50	\$32.38	\$4.63	\$4.15	\$6.80

Rate Element Allocation

Element	Percentage	Value
Depreciation (ownership)	6%	\$30.30 / mo
Overhaul (ownership)	91%	\$459.55 / mo
CFC (ownership)	1%	\$5.05 / mo
Indirect (ownership)	2%	\$10.10 / mo
Fuel (operating) @ \$3.60	23%	\$0.94 / hr

Revised Date: 1st Half 2015

Change Order No. 1 - Resulting Pipes, 2 and 3 with Embankment and Plug
Bonnieview Road Cross Drain Repairs
CM2210
Kirby Development, Inc.

Daily Rental Cost:

Gorilla Cart - 600 LB Plastic Garden Dump Cart

Ace Hardware	\$ 62.99
Home Depot	\$ 69.97
Lowes	\$ 69.98
	<u>\$ 202.94</u>

Average \$ 67.65

Daily Rate \$ 2.18

Tax \$ 0.15

Daily Rental Cost \$ 2.33



Need Help? Call 1-866-290-5334
Visit acehardware.com for more information.

Gorilla Carts® 600lb Plastic Garden Dump Cart

SKU 7226665 | 722571003647

\$ 62.99

10% Off this item now through June 1st! Above price includes savings. Offer valid online only.

Product Details

- 600 pound load capacity
- Ideal for yard and landscaping projects
- Balanced dumping for quick unloading
- Durable molded bed will not rust
- Bed size: 7-1/2"H x 19-3/4"W x 36-1/4"L
- 10" pneumatic tires
- Straight pull handle
- Some assembly required

This item can be purchased on-line, however, due to shipping restrictions, ITEM PICKUP IS ONLY AVAILABLE AT YOUR LOCAL ACE STORE.

Find an Ace Store

No store selected yet. To have this item delivered to an Ace store, please use our store locator.

Notes



More saving.
More doing.

Your Store:
Jacksonville #6346 (Change)

Gorilla Carts | Model # GOR200B | Internet # 202353037 | Store SKU # 824154

3 cu. ft. Plastic Garden Dump Cart

★★★★☆ (274) | Write a Review | Questions & Answers (3)

\$69.97 / each

IN STOCK AT YOUR SELECTED

Jacksonville #6346
Jacksonville, FL 32205

2 In Stock
Aisle OG, Bay 1



PRODUCT OVERVIEW | Model # GOR200B | Internet # 202353037 | Store SKU # 824154

This Gorilla Carts Garden Dump Cart features a patented dumping system that makes unloading easy and simple. The dump tub won't rust, and the 10 in. pneumatic tires are designed to handle any terrain. With a 600 lb. load capacity, this cart is perfect for the lawn professional, and is a great alternative to a standard wheelbarrow anywhere around the home, garden, barn, or

- Patented dumping system makes unloading quick and easy
- Sturdy poly tub is easy to clean and won't rust
- Yellow zinc-plated hardware resists corrosion
- 10 in. pneumatic tires can handle any terrain
- Padded steel handle for easy maneuverability
- 600 lb. load capacity
- Note: Product may vary by store

SPECIFICATIONS

DIMENSIONS

Assembled Depth (in.)	40.75 in	Product Height (in.)	37.50
Assembled Height (in.)	20.25 in	Product Width (in.)	20.75
Assembled Width (in.)	20 in	Wheel Size (in.)	10
Product Depth (in.)	8.75		

DETAILS

Bin Material	Plastic	Handle Material	Steel
Capacity (cu. Ft.) - Total	3	Pneumatic Tires	Yes
Capacity (lb.)	600 lb	Product Weight (lb.)	39 lb
Dump Cart	Yes	Returnable	90-Day
Flat-Free Tires	No	Wheel Material	Rubber
Garden Center Tool Type	Yard Cart		

WARRANTY / CERTIFICATIONS

Manufacturer Warranty	None
-----------------------	------

SHIPPING AND DELIVERY OPTIONS

Standard Shipping includes delivery by small parcel service. Processing time varies by product.

Orders for this item may be expedited for an additional fee.

Other Delivery Options:

Express and **Expedited** shipping options are also available. Estimated arrival times are available in checkout.

If product is eligible for shipping to AK, HI and US Territories additional transit time and remote surcharges may apply.

Your Store:
E Jacksonville, FL

Your Store: Jacksonville, FL



Gorilla Carts 3-cu ft Poly Yard Cart

Item #: 14335 | Model #: GOR200B

★★★★★

\$69.98



FREE Store Pickup

Your order can be available for pickup in Lowe's Of E Jacksonville, FL today.

Lowe's Truck Delivery

Your order will be ready for delivery to you from your selected store.

Parcel Shipping

Sent by carriers like UPS, FedEx, USPS, etc.

Gorilla Carts 3-cu ft Poly Yard Cart \$69.98

Tweet

1 email

Description

3-cu ft Poly Yard Cart

- 600-lb. capacity
- Ideal for yard and landscaping projects
- Balanced dumping for quick unloading
- Durable, molded bed will not rust
- All-terrain pneumatic tires

Specifications

Series Name	N/A	Tire Type	Pneumatic
Capacity (Cu. Feet)	3	Handle Material	Steel
Weight Limit (lbs.)	600	Handle Grips	Yes
Cart Material	Poly	Towable	No
Folding Cart	No	Manufacturer Color/Finish	Black
Number of wheels	4	Color/Finish Family	Black
Cart Wheel Size (Inches)	10	Cart Weight (lbs.)	41
Flat-Free Tire(s)	No	Warranty	1-year limited

Change Order No. 1 - Resulting Pipes, 2 and 3 with Embankment and Plug Bonnleview Road Cross Drain Repairs CM2210 Kirby Development, Inc.	
8" Layer of Brick - Clay Used to Plug 2 48" x 76" Elliptical Pipe	
Brick	
Lowes	\$ 0.48
Home Depot	\$ 0.75
	<u>\$ 1.23</u>
Average	\$ 0.62

2015 Design Standards Index No. 280 - Masonry plugs - a minimum of 8" thickness

Radius of the 48" x 76" Elliptical Pipe

$$\begin{aligned}
 A &= \pi \times r \times r \\
 A &= 3.14 \times 31 \times 31 = 961 \\
 A &= 3.14 \times 961 = 3017.54
 \end{aligned}$$

Brick - Clay

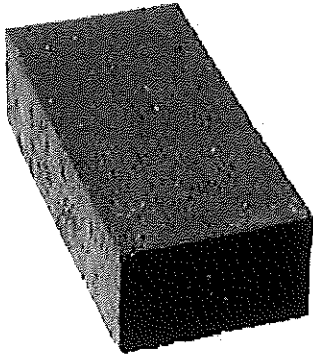
$$\begin{aligned}
 L \times H &= 7.75 \times 2.5 = 19.375 \\
 3017.54 / 19.375 &= 155.744 \\
 155.744 \times 2 &= 311.488
 \end{aligned}$$

$$\text{No. of Bricks to Plug 4 Pipes} \quad 311 \times 4 = 1244$$

Total No. of Bricks Needed 1244

Your Store:
E Jacksonville, FL

Your Store: Jacksonville, FL



Pacific Clay Red Velour Solid Clay Brick

Item #: 149492 | Model #: 024300200

★★★★★

\$0.48



FREE
Store Pickup

Lowe's Truck Delivery

Parcel Shipping
Unavailable for This Order

Sent by carriers like UPS,
FedEx, USPS, etc.

Pacific Clay Red
Velour Solid Clay
Brick **\$0.48**

Tweet



0 email

Description

Red Velour Solid Clay Brick

- 20-year warranty
- Natural clay brick, resistant to color fading
- Easy to install, low in maintenance, colorfast, low in absorption, high strength, durable, and freeze and thaw-resistant
- This paver meets ASTM C-902 standards
- Can be used alone, or accompanied with additional product offerings such as pavers, thin brick, and face brick

Specifications

Brick Material	Clay	Actual Height (Inches)	2.25
Brick Type	Solid	Actual Length (Inches)	8
Standard Size	Yes	Actual Width (Inches)	3.75
Color/Finish	Red velour	Common Height (Inches)	2.25
		Common Length (Inches)	8
Weight (lbs.)	5.3	Common Width (Inches)	3.75
ANSI Safety Listing	No		
Color/Finish Family	Red		



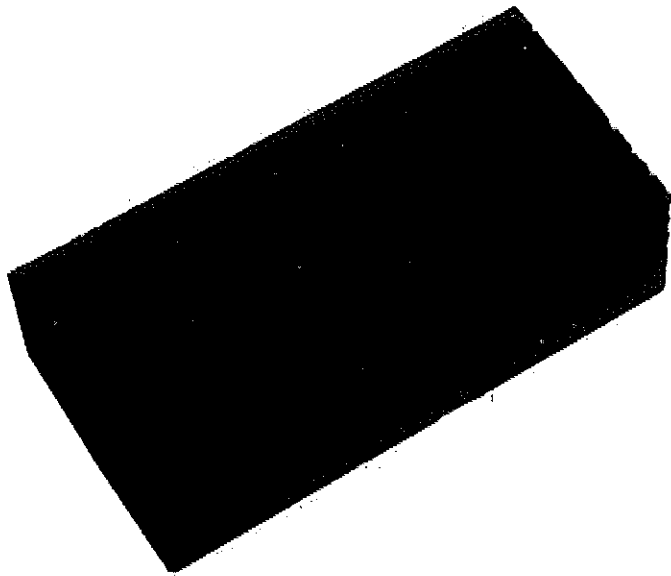
More saving.
More doing.

Your Store:
Jacksonville #6346 (Change)

Model # 101074 | Internet # 202323984 | Store SKU # 530999

7.75 in. x 3.5 in. x 2.25 in. Solid Clay Brick

★★★★★ (2) | [Write a Review](#) | [Questions & Answers \(2\)](#)



\$0.75 / each

Jacksonville #6346
Jacksonville, FL 32205

363 In Stock
Aisle 20, Bay 01

[Show Expanded View](#)

[Click to Zoom](#)

PRODUCT OVERVIEW [Model # 101074](#) | [Internet # 202323984](#) | [Store SKU # 530999](#)

Titan Block is one of the nation's largest producers of concrete block. Titan Block's products are found in all types of const schools, factories to office buildings. The 3.75 in. x 2.25 in. x 7.5 in. Solid Clay Brick may be used for patios, walkways or l

- Concrete block is most sustainable and most long-lasting building product investments available
- Gains strength with age, is exceptionally durable and offers unsurpassed protection against fire, termites and wind
- We manufacture many different shapes and sizes of block in both light weight and normal weight mix designs
- Our products are produced on state-of-the-art equipment and manufactured with quality and attention to detail
- We offer direct ship service to job sites
- Note: product may vary by store

SPECIFICATIONS

DIMENSIONS

Product Depth (in.)	7.5	Product Width (in.)	3.75
Product Height (in.)	2.25		

DETAILS

Block/Brick/Lintel	Block	Product Weight (lb.)	4.5 lb
Color Family	Red	Water repellent	No
Compression strength (psi)	500		

WARRANTY / CERTIFICATIONS

Manufacturer Warranty	No Warranty
-----------------------	-------------

SHIPPING AND DELIVERY OPTIONS

Store Exclusive. This item is available for purchase in select stores only.

NASSAU COUNTY ENGINEERING SERVICES
ENGINEER'S WEEKLY SUMMARY

Weekday	Date	Summary of Work Performed, Events, Observations and Remarks	Contract Day
Monday	04/27/15	Kirby Development Inc. NO WORK performed by contractor (KDI). A field meeting was held Friday 4/24/15 with Jonathan Page (NC Project Manager), Peter Kirby (KDI) and Joseph Hanifen (CDMS Inspector) present; it was discussed that no work would be preformed today due to the need to review and decide on how to move forward. After review, Option 2 - Resilting of Pipes 2 and 3 and plugging ends, was chosen. KDI will resilt pipes 2 and 3 with embankment material and cap off ends.	29
Tuesday	04/28/15	KDI filling pipes 2 and 3 with embankment material (leftover from what was truck in for the shoulders). They are using the Cat 308E Excavator (Superintendent) to lower the embankment material into a Gorilla Carts® 600lb Plastic Garden Dump Cart. 1 skilled/common wheeling embankment into the pipes, then 2 (skilled/common) shoveling it out and stacking it in the pipes. Personnel on site 1 Superintendent, 2 Skilled, 1 Common, 1 Cat 308E Excavator, 1 Cat 924K Loader. Contractor on site 7:30 am to 6:00 pm with a 30 min lunch. 8:00 am to 11:00 am Dewatering work zone, 11:00 to 11:30 am Lunch, 11:30 am to 5:30 pm working on resiltng pipes 2 and 3. 5:30 to 6:00 pm Job site cleanup. Cat 308E Excavator estimated hours used 3.5, 1 Cat 924K Loader estimated hours used 1.0, Gorilla Carts® 600lb Plastic Garden Dump Cart estimated hours used 6.0 1 Superintendent 6.0 hours working resiltng pipes , 2 Skilled 6.0 hours working resiltng pipes, 1 Common 6.0 hours working resiltng pipes.	30
Wednesday	04/29/15	KDI filling pipes 2 and 3 with embankment material (leftover from what was truck in for the shoulders). They are using the Cat 308E Excavator (Superintendent) to lower the embankment material into a Gorilla Carts® 600lb Plastic Garden Dump Cart. 1 skilled/common wheeling embankment into the pipes, then 2 (skilled/common) shoveling it out and stacking it in the pipes. Personnel on site 1 Superintendent, 2 Skilled, 1 Common, 1 Cat 308E Excavator, 1 Cat 924K Loader. Contractor on site 7:30 am to 6:00 pm with a 30 min lunch. 8:00 am to 11:00 am Dewatering work zone, 11:00 to 11:30 am Lunch, 11:30 am to 5:30 pm working on resiltng pipes 2 and 3. 5:30 to 6:00 pm Job site cleanup. Cat 308E Excavator estimated hours used 3.5, 1 Cat 924K Loader estimated hours used 1.0, Gorilla Carts® 600lb Plastic Garden Dump Cart estimated hours used 6.0 1 Superintendent 6.0 hours working resiltng pipes , 2 Skilled 6.0 hours working resiltng pipes, 1 Common 6.0 hours working resiltng pipes.	31
Thursday	04/30/15	KDI filling pipes 2 and 3 with embankment material (leftover from what was truck in for the shoulders). They are using the Cat 308E Excavator (Superintendent) to lower the embankment material into a Gorilla Carts® 600lb Plastic Garden Dump Cart. 1 skilled/common wheeling embankment into the pipes, then 2 (skilled/common) shoveling it out and stacking it in the pipes. Personnel on site 1 Superintendent, 2 Skilled, 1 Common, 1 Cat 308E Excavator, 1 Cat 924K Loader. Contractor on site 7:30 am to 6:00 pm with a 30 min lunch.8:00 am to 11:00 am Dewatering work zone, 11:00 to 11:30 am Lunch, 11:30 am to 5:30 pm working on resiltng pipes 2 and 3. 5:30 to 6:00 pm Job site cleanup. Cat 308E Excavator estimated hours used 3.5, 1 Cat 924K Loader estimated hours used 1.0, Gorilla Carts® 600lb Plastic Garden Dump Cart estimated hours used 6.0 1 Superintendent 6.0 hours working resiltng pipes , 2 Skilled 6.0 hours working resiltng pipes, 1 Common 6.0 hours working resiltng pipes.	32
Friday	05/01/15	KDI filling pipes 2 and 3 with embankment material (leftover from what was truck in for the shoulders). They are using the Cat 308E Excavator (Superintendent) to lower the embankment material into a Gorilla Carts® 600lb Plastic Garden Dump Cart. 1 skilled/common wheeling embankment into the pipes, then 2 (skilled/common) shoveling it out and stacking it in the pipes. Personnel on site 1 Superintendent, 2 Skilled, 1 Common, 1 Cat 308E Excavator, 1 Cat 924K Loader. Contractor on site 7:30 am to 6:00 pm with a 30 min lunch. One load of embankment material delivered onstie by J.B Coxwell Pit Location.8:00 am to 11:00 am Dewatering work zone, 11:00 to 11:30 am Lunch, 11:30 am to 5:30 pm working on resiltng pipes 2 and 3. 5:30 to 6:00 pm Job site cleanup. Cat 308E Excavator estimated hours used 3.5, 1 Cat 924K Loader estimated hours used 1.0, Gorilla Carts® 600lb Plastic Garden Dump Cart estimated hours used 6.0 1 Superintendent 6.0 hours working resiltng pipes , 2 Skilled 6.0 hours working resiltng pipes, 1 Common 6.0 hours working resiltng pipes.	33
Saturday	05/02/15	No WORK	34
Sunday	05/03/15	No WORK	35

Virgil Rook, PE						
SR PROJECT ENGINEER (Print Name and Rank)			SR PROJECT ENGINEER (Signature)			
Bid/RFP No		PROJECT DESCRIPTION			CONTRACT No	
NC14-023		Bonnieview Road Cross Drain Repair			CM-2210	
WEEK ENDING		CONTRACTOR			FDOT No	
May 3, 2015		Kirby Development, Inc.			N/A	
ALLOWABLE CONTRACT DAYS	DAYS USED	CONTRACT AMOUNT	AMOUNT PAID TO DATE	JOB PROGRESS		SCHEDULE PROGRESS (%)
				% COMPLETE (Time)	% COMPLETE (\$\$)	
45	35	\$134,892.45	\$0.00	77.8%	0.0%	

This form summarizes the information on Daily Reports of Construction from Monday through Sunday.

DISTRIBUTION: Original - Project File
Copy - Contractor (as requested)
Copy - Nassau Co (as requested)

NASSAU COUNTY ENGINEERING SERVICES
ENGINEER'S WEEKLY SUMMARY

Weekday	Date	Summary of Work Performed, Events, Observations and Remarks	Contract Day			
Monday	05/04/15	KBI arrived on site at 6:00am this morning started working on bricking pipe run 3 on the north end of the pipe. The tide came in at 9:00 am this morning filling their work area so they were unable to continue with filling pipe run 2. They started to drive sheet piling on the south side of project and hit something on the bottom. Nothing has broken they felt something at the bottom and stopped working. They are waiting on the tide to go out the tide is Schedule to go back out at 3:00 pm. They have stated they will resume work at 3:00 pm when the tide goes out and continue working until 4:30 PM Cat 308E Excavator estimated hours used 2.5, 1 Cat 924K Loader estimated hours used .5, Gorilla Carts® 600lb Plastic Garden Dump Cart estimated hours used 3.0 1 Superintendent 3.0 hours working re-slitting pipes , 2 Skilled 3.0 hours working re-slitting pipes, 1 Common 3.0 hours working re-slitting pipes.	36			
Tuesday	05/05/15	KDI filling pipe 2 with embankment material. They are using the Cat 308E Excavator (Superintendent) to lower the embankment material into a Gorilla Carts® 600lb Plastic Garden Dump Cart. 1 skilled/common wheeling embankment into the pipes, then 2 (skilled/common) shoveling it out and stacking it in the pipes. Personnel on site 1 Superintendent, 2 Skilled, 1 Common, 1 Cat 308E Excavator, 1 Cat 924K Loader. Contractor on site 6:00 am to 5:30 pm with a 30 min lunch. 6:00 am to 7:00 am Dewatering work zone, filling pipe 2 with embankment material 7:30 to 10:30 am tide in stop work, 10:30 am to 11:30 am Job site cleanup and filling sand bags. 11:30 am to 12:00 pm lunch. Dewatering work zone 12:00 to 2:00 pm. 2:00 pm to 5:00 filling pipe 2 with embankment material. 5:00 pm to 5:30 Job site cleanup. Cat 308E Excavator estimated hours used 2.5, 1 Cat 924K Loader estimated hours used .5, Gorilla Carts® 600lb Plastic Garden Dump Cart estimated hours used 6.0 1 Superintendent 6.0 hours working re-slitting pipes , 2 Skilled 6.0 hours working re-slitting pipes, 1 Common 6.0 hours working re-slitting pipes.	37			
Wednesday	05/06/15	KDI filling pipe 2 with embankment material. They are using the Cat 308E Excavator (Superintendent) to lower the embankment material into a Gorilla Carts® 600lb Plastic Garden Dump Cart. 1 skilled/common wheeling embankment into the pipes, then 2 (skilled/common) shoveling it out and stacking it in the pipes. Personnel on site 1 Superintendent, 2 Skilled, 1 Common, 1 Cat 308E Excavator, 1 Cat 924K Loader. Contractor on site 6:00 am to 2:30 pm with a 30 min lunch. 6:00 am to 7:00 am Dewatering work zone, filling pipe 2 with embankment material 7:00 to 10:00 am, 10:00 am to 11:00 am bricking south-end pipe run 2. 11:00 am to 11:30 pm lunch. 11:30 am to 2:30 pm Job site cleanup. Cat 308E Excavator estimated hours used 1.5, 1 Cat 924K Loader estimated hours used .5, Gorilla Carts® 600lb Plastic Garden Dump Cart estimated hours used 3.0 1 Superintendent 3.0 hours working re-slitting pipes , 2 Skilled 3.0 hours working re-slitting pipes, 1 Common 3.0 hours working re-slitting pipes.	38			
Thursday	05/07/15	Kirby Development Inc. Constructing Modified Fdot Standard Index 258 Straight Sand-cement Endwalls on South side of project from west to east over pipes 1,2,3. Personal onsite 1 Superintendent 2 Skilled, 1 Common, 1 Cat 308E Excavator, 1 Cat 924K Loader. 6:00 am to 7:00 am Dewatering work zone. 7:00 am to 10:00 am installing sheet piling. 10:00 am to 11:30 installing headwall. 11:30 am to 12:00 pm Lunch. 12:00 pm to 2:00 installing headwall. 2:00 pm to 2:30 Job site clean up	39			
Friday	05/08/15	Kirby Development Inc. Constructing Modified Fdot Standard Index 258 Straight Sand-cement Endwalls on South side of project from west to east over pipes 1,2,3. Personal onsite 1 Superintendent 2 Skilled, 1 Common, 1 Cat 308E Excavator, 1 Cat 924K Loader. 6:00 am to 7:00 am Dewatering work zone. 7:00 am to 10:00 am installing sheet piling. 10:00 am to 11:30 installing headwall. 11:30 am to 12:00 pm Lunch. 12:00 pm to 2:00 installing headwall. 2:00 pm to 2:30 Job site clean up. JBC 1 load embankment	40			
Saturday	05/09/15	No WORK	41			
Sunday	05/10/15	No WORK	42			
Virgil Rook, PE						
SR PROJECT ENGINEER (Print Name and Rank)		SR PROJECT ENGINEER (Signature)				
Bid/RFP No	PROJECT DESCRIPTION		CONTRACT No			
NC14-023	Bonnieview Road Cross Drain Repair		CM-2210			
WEEK ENDING	CONTRACTOR		FDOT No			
May 10, 2015	Kirby Development, Inc.		N/A			
ALLOWABLE CONTRACT DAYS	DAYS USED	CONTRACT AMOUNT	AMOUNT PAID TO DATE	JOB PROGRESS		SCHEDULE PROGRESS (%)
				% COMPLETE (Time)	% COMPLETE (\$\$)	
45	42	\$134,892.45	\$0.00	93.3%	0.0%	

This form summarizes the information on Daily Reports of Construction from Monday through Sunday.

DISTRIBUTION: Original - Project File
Copy - Contractor (as requested)
Copy - Nassau Co (as requested)

Harmon, Mary

From: Martin, Derrick R
Sent: Tuesday, April 28, 2015 10:01 AM
To: jpage@nassaucountyfl.com
Cc: Rook, Virgil E; Hanifen, Joseph L; Harmon, Mary
Subject: Pipe Repair Options, Bonnieview Road Crossdrain Repair, CM2210

Categories: Bonnieview Road

Jonathan,

After a review of the site conditions for Bonnieview Road Cross Drain Repair project, we offer the following for your review:

Option 1: Pipe Liner (Quotes submitted by Kirby Development, Inc.)

Push Through Liner: \$129,000.00

Perma-Liner: \$144,000.00

Concerns: Expensive to perform, time consuming which causes public impact. Should be engineered and competitively bid.

Option 2: Resilt Pipes (Quote submitted by Kirby Development, Inc.)

No. 2 and 3 with embankment material and cap off ends: \$19,740.00

Concerns: Will pipe No. 1 and 4 have adequate capacity and hold up under heavy volume in the event of a major weather event.

Option 3: Flowable Fill (D2 Weight Average for Last 6 Months)

Fill 80' (2 lines) of elliptical pipe (48" by 76") No. 2 and 3 with approximately 62 CY at

\$189.18/YD: \$11,729.16

Concerns: Pipe run will no longer be salvageable

Option 4: Temporary Repairs

Perform temporary repairs to misaligned/damaged joints until it becomes feasible to issue a contract for a permanent fix.

Note: Would need approval from EOR and price proposal from Kirby Development, Inc.

Option 5: No Repair

No repairs at this time.

Concerns: Continuation of erosion around drainage and settlement of the roadway and possible roadway failure

Side Note: Recommend milling and resurfacing be postponed until permanent repairs are made.

We could discuss by phone today if needed. Have a great day!!!!!!

Derrick Martin

Asst PA/Sr. Inspector

CDM Smith

7029-1 Commonwealth Avenue

Jacksonville, FL 32220

904.781.8131

904.781.8138 Fax

904-451-0077 Mobile

martindr@cdmsmith.com

cdmsmith.com

Harmon, Mary

From: Peter Kirby <pbk@kirbydevelopment.com>
Sent: Wednesday, April 08, 2015 12:44 PM
To: Hanifen, Joseph L.; Martin, Derrick R; Rook, Virgil E; Jimmy Davidson; Harmon, Mary
Subject: Bonnieview road Cross Drain repair
Attachments: IMAG0817, joint1.jpg; IMAG0820, joint 3.jpg; IMAG0822, joint 4.jpg; IMAG0823, joint 4.jpg

Categories: Bonnieview Road

Derrick,

Attached please find pictures of the pipe joints in the first pipe run. You will notice that there is considerable seperation at the widest point in each joint. In one joint (pic 4) at the bottom there is no bell and we can reach the fill material. I'm not sure the chemical grout is designed to seal where there is no pipe structure as is this case. This joint "boils sand" continuously.

Just want to make sure all parties understand these conditions and want to continue with the designed corrective measures.

Call with questions

Thanks

Peter

--

Peter B. Kirby

President

Kirby Development, Inc

4312 Pablo Professional Court

Jacksonville, Florida 32224

Business: 904-821-5010

Fax: 904-821-5011

Cell: 904-621-7046



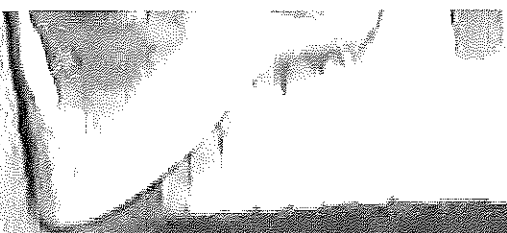
4

5

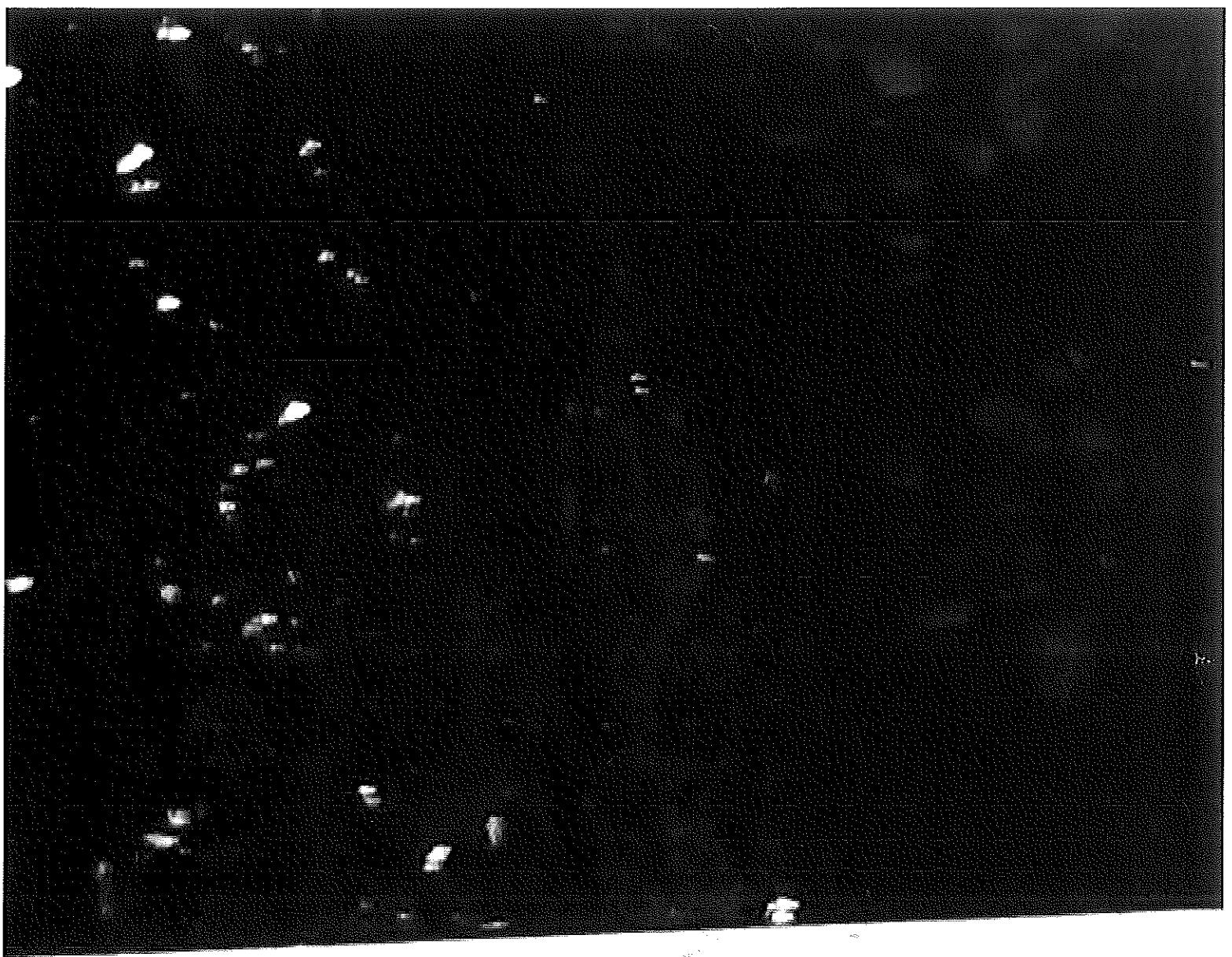
6

7

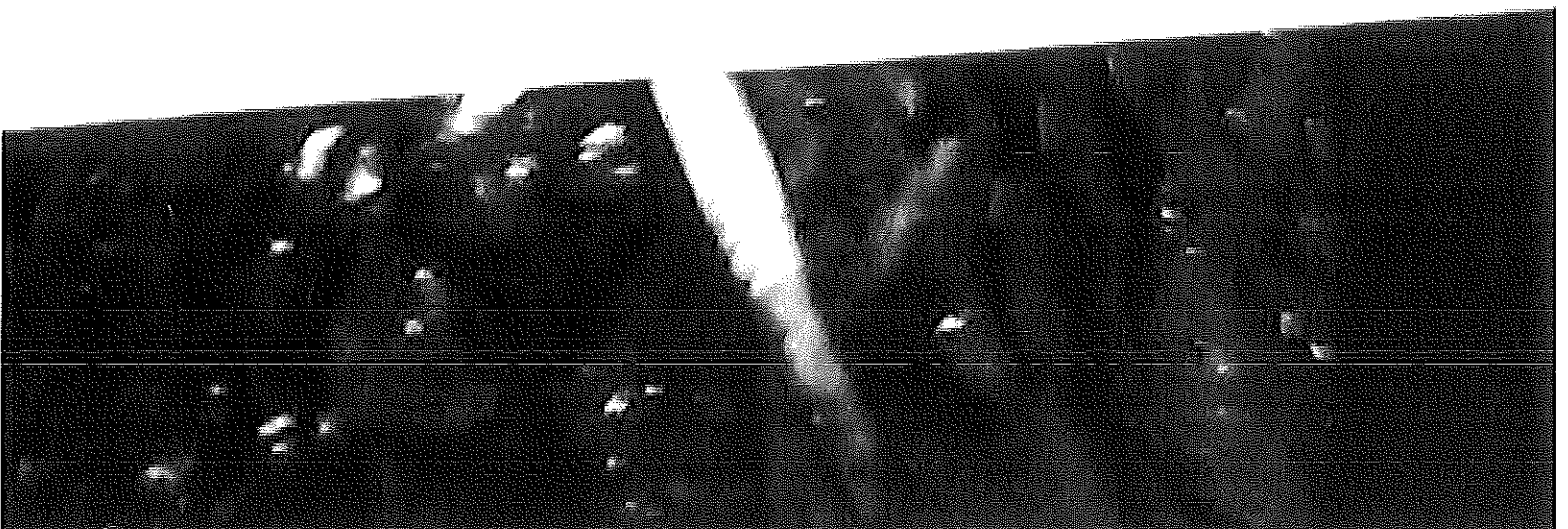
P.P. APPEND
NO. 289 TC



101-2-3



1 2 3 4 5 6 7 8 9 10 11 12 13 14 15 16 17 18 19 20 21 22 23 24 25 26 27 28 29 30 31 32 33 34 35 36 37 38 39 40 41 42 43 44 45 46 47 48 49 50 51 52 53 54 55 56 57 58 59 60 61 62 63 64 65 66 67 68 69 70 71 72 73 74 75 76 77 78 79 80 81 82 83 84 85 86 87 88 89 90 91 92 93 94 95 96 97 98 99 100



MONTHLY PAY ITEM ESTIMATE WORKSHEET

Estimate #	Project Description	F.P.N.	
1	Bonnieview Road Cross Drain Repair, Nassau County		
Period	Contract Days Allowed:	45	
	Contract Days Used Through Est.:		

Amount Due This Estimate:	\$128,226.53	% Complete:	
Total Contract Amount:	\$134,892.45	Amount To Date:	\$134,892.45

SW Line No.	Item No.	SA	Item Description	Unit	Plan Qty	Unit Price	Contract Amount	Quantity This Est.	Quantity Last Est.	Quantity To Date	Amount This Est.	Amount Last Est.	Amount To Date	% Comp To Date	Quantity Over/Under	Amount Over/Under
1	101-1		Mobilization	LS	1.00	\$31,408.12	\$31,408.12	1.00	0	1.00	\$31,408.12	\$0.00	\$31,408.12	100.0%	0.00	\$0.00
2	102-1		Maintenance of Traffic	LS	1.00	\$1,447.20	\$1,447.20	1.00	0	1.00	\$1,447.20	\$0.00	\$1,447.20	100.0%	0.00	\$0.00
3	104-103		Sealment Barrier (2 Applications)	LS	400.00	\$5.96	\$2,384.00	400.00	0	400.00	\$2,384.00	\$0.00	\$2,384.00	100.0%	0.00	\$0.00
4	110-1-1		Crack & Sealing	LS	0.35	\$5,217.94	\$1,826.28	0.35	0	0.35	\$1,826.28	\$0.00	\$1,826.28	100.0%	0.00	\$0.00
5	120-1		Rebar Escalation	SV	550.00	\$19.240	\$10,622.00	550.00	0	550.00	\$10,622.00	\$0.00	\$10,622.00	100.0%	0.00	\$0.00
6	130-6		Embankment	CY	550.00	\$21.680	\$11,924.00	550.00	0	550.00	\$11,924.00	\$0.00	\$11,924.00	100.0%	0.00	\$0.00
7	130-1		Rebar, Sand-Cement	CY	63.00	\$489.310	\$30,865.53	63.00	0	63.00	\$30,865.53	\$0.00	\$30,865.53	100.0%	0.00	\$0.00
8	130-7-4		Bedding Stone	LS	18.30	\$184.240	\$3,360.59	18.30	0	18.30	\$3,360.59	\$0.00	\$3,360.59	100.0%	0.00	\$0.00
9	130-7-2		Sod (Bermuda)	SV	200.00	\$6.030	\$1,206.00	200.00	0	200.00	\$1,206.00	\$0.00	\$1,206.00	100.0%	0.00	\$0.00
10	101-1		Mobilization	SV	1.00	\$1,675.000	\$1,675.00	1.00	0	1.00	\$1,675.00	\$0.00	\$1,675.00	100.0%	0.00	\$0.00
11	102-1		Maintenance of Traffic	SV	1.00	\$723.60	\$723.60	1.00	0	1.00	\$723.60	\$0.00	\$723.60	100.0%	0.00	\$0.00
12	102-2		Milling Existing Asphalt Pavement (7' Avn Depth)	TN	251.00	\$16.590	\$4,164.09	73.00	0	73.00	\$1,208.27	\$0.00	\$1,208.27	26.1%	-27.80	(\$3,703.82)
13	104-1-12		Superpave Asphalt Concrete (SP-12.5)(Traffic B)	TN	32.00	\$277.320	\$8,874.24	32.00	0	32.00	\$8,874.24	\$0.00	\$8,874.24	100.0%	0.00	\$0.00
14	700-20-50		Single Post Sign Retrocat	CY	1.00	\$201.00	\$201.00	1.00	0	1.00	\$201.00	\$0.00	\$201.00	100.0%	0.00	\$0.00
15	711-11-111		Thermoplastic Standard, White, Solid, 5'	LF	260.00	\$4,250	\$1,105.00	260.00	0	260.00	\$1,105.00	\$0.00	\$1,105.00	100.0%	0.00	\$0.00
16	711-11-211		Thermoplastic Standard, Yellow, Solid, 5'	LF	260.00	\$4,250	\$1,105.00	260.00	0	260.00	\$1,105.00	\$0.00	\$1,105.00	100.0%	0.00	\$0.00
17	101-1		Mobilization	LS	1.00	\$2,988.20	\$2,988.20	1.00	0	1.00	\$2,988.20	\$0.00	\$2,988.20	100.0%	0.00	\$0.00
18	102-1		Maintenance of Traffic	LS	1.00	\$723.60	\$723.60	1.00	0	1.00	\$723.60	\$0.00	\$723.60	100.0%	0.00	\$0.00
19	200-90-4		Prop Drilling	LF	200.00	\$53.220	\$10,644.00	400.00	0	400.00	\$21,288.00	\$0.00	\$21,288.00	200.0%	-200.00	\$10,644.00

Total Contract Estimate	\$134,892.45	Amount To Date	
SV Retainage	\$6,643.50	Retainage To Date	\$6,643.50
Amount Due This Estimate:	\$128,226.53	% Complete:	98.5%

TOTALS:

Original Contract Amount:	\$134,892.45	Amount To Date	
SV Retainage	\$6,643.50	Retainage To Date	\$6,643.50
Amount Due This Estimate:	\$128,226.53	% Complete:	98.5%

Underun
Overun
Dollared Work